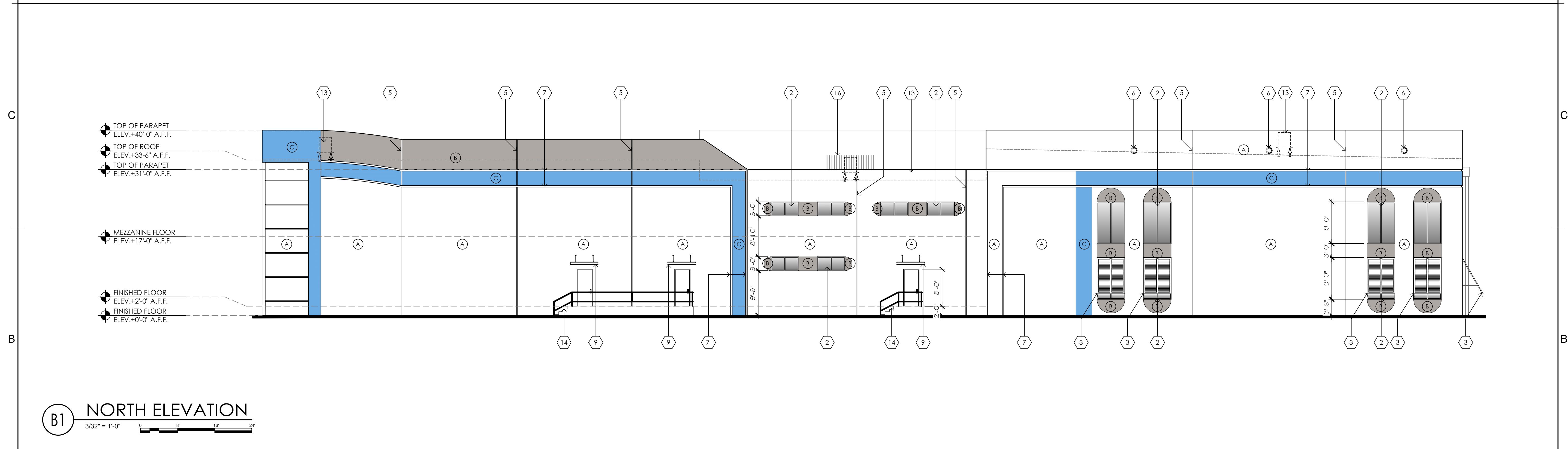


D1 EAST ELEVATION
3/32" = 1'-0"



B1 NORTH ELEVATION
3/32" = 1'-0"

<div>FINISH (A)</div> <div>PAINTED CONCRETE EXTRA WHITE SW 7006</div>	<div>FINISH (C)</div> <div>PAINTED CONCRETE MARINER SW 6766</div>	<div>FINISH (E)</div> <div>CORUGATED SHEET METAL SLIDING DOOR PROPER GREY COLOR: SW 60031</div>
<div>FINISH (B)</div> <div>PAINTED CONCRETE PROPER GREY SW 6003</div>	<div>FINISH (D)</div> <div>WOOD SLATS COLOR: PARCHEMENT STONE VENEER AND GAP DETAIL ON SHEET A-503</div>	<div>FINISH (F)</div> <div>PREFAB MTL CANOPY MANUFACTURER, BAKED ENAMEL COLOR: EXTRA WHITE SW 7006</div>

A4 COLOR LEGEND

NOTE:
ALL COLORS ARE SUBJECT TO BE APPROVED BY OWNER PRIOR TO FINAL SELECTION

- 1

IMPACT RESISTANT, ALUMINUM STORE FRONT AND WINDOW SYSTEM AND LT. TINTED GLASS (TYP.)
- 2

IMPACT RESISTANT, ALUMINUM WINDOWS (TYP.)
- 3

LOUVERED WINDOW SHADES.
- 4

CORRUGATED STEEL SLIDING DOOR.
- 5

TILT-UP CONCRETE PANEL EXPANSION JOINTS.
- 6

"PORT HOLE" DECORATION (TYP.)
- 7

2" RECESSED REVEALS IN CONCRETE TILT-UP PANELS.
- 8

STEEL COLUMNS FOR METAL CANOPY (TYP.)
- 9

METAL CANOPY BY PREFAB MANUFACTURER FOR SIGNAGE. SHOP DRAWINGS TO BE PROVIDED.

10

LIGHT FIXTURES. SEE ELECTRICAL DRAWINGS.

11

EXTERIOR WOODEN SLAT PANELING.

12

SIGN BY OTHERS UNDER SEPARATE PERMIT. SHOP DRAWINGS TO BE PROVIDED FOR THE MTL PREFAB CANOPY.

13

RTU 6" MIN. BELOW PARAPET / SCREENING HEIGHT.

14

CONCRETE EGRESS STAIRS.

15

STEEL ROLL-UP DOOR.

16

RTU SCREENING.

A6 KEY NOTES

PROPOSED SITE IMPROVEMENTS FOR:
POMPANO BEACH MARINE CENTER

701 FEDERAL HIGHWAY POMPANO BEACH, FL 33062

barranco gonzalez • architecture • planning • interior design

phone: (954)961-7675 fax: (954) 961-7685 mail@bgarchitecture.com

STATE OF FLORIDA
JOHN F. BARRANCO
ARCHITECT
ARB#2471

1915 southeast 4th avenue
fort lauderdale, fl 33316

DESIGNED
JPB

DRAWN
JO/SRS

CHECKED
JPB

DATE:
06.27.2025

COMM:
231120

this document or parts thereof may not
be reproduced in any form without
permission copyrighted material ©

REVISIONS

EXTERIOR ELEVATIONS

SITE PLAN APPROVAL

A-201

THE ARCHITECT HEREBY EXPRESSLY RESERVES THE COPYRIGHT AND PROPERTY RIGHTS IN THESE PLANS. DRAWINGS ARE NOT TO BE REPRODUCED, CHANGED, OR COPIED IN ANY FORM OR MANNER WHATSOEVER WITHOUT FIRST OBTAINING WRITTEN PERMISSION AND CONSENT. NOR ARE THEY TO BE ASSIGNED TO ANY PARTY WITHOUT FIRST OBTAINING SAID WRITTEN PERMISSION AND CONSENT.

12000020

12/03/2025

12

13

14

15

16